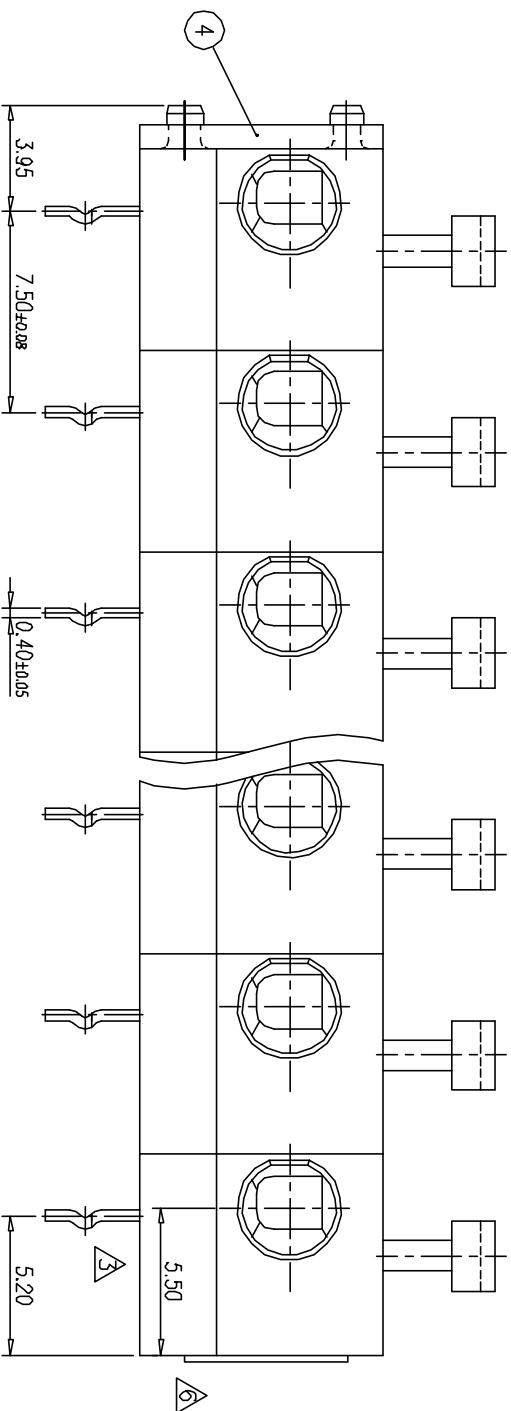
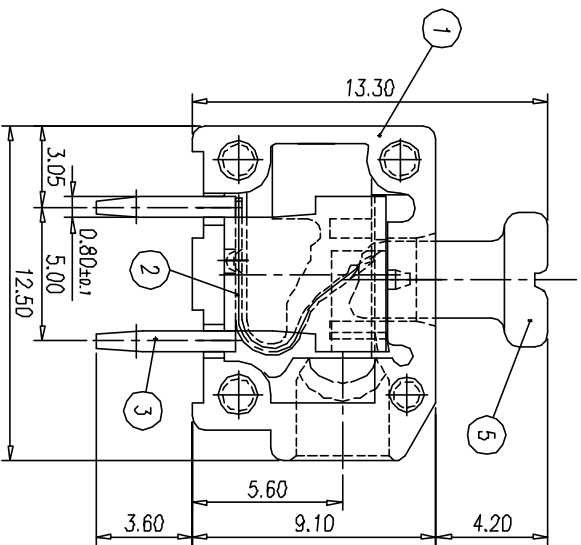
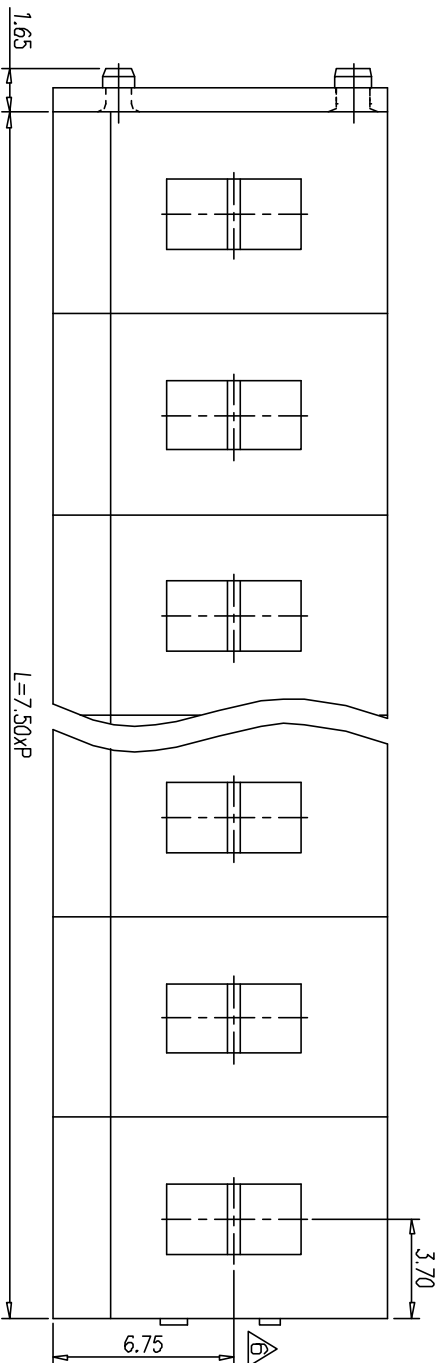


P.C.B. LAYOUT(REF)



NOTES:

1. Rating: 300V 10A (IEC 450V 24A)
2. Insulation Withstands Voltage: AC 1500V/MIN
3. Insulation Resistance: 500MΩ or more at DC500V
4. Using Temperature Range: -40°C~+105°C

Undimensioned Electric Wire: 20~14AWG (IEC 0.5~2.5mm²)

~	~	0.05/10
		0.2/10
UNDIMENSIONS		0.05/10
TOLERANCES		±0.3

Undimensioned Tolerances:

△	工程製	H J	08.06.14	ITEM	NAME OF PART	NO. OF PART	QTY	MATERIAL	NOTES
△	工程製 (2005.04.30製)	HQH	06.01.07	1	HOUSING	0056A3XX00	P	PA66(V0)	※002: M001
△	工程製	Y.Y	05.05.18	2	CLAMP	0056B00300	P	STEEL	
△	工程製 米處	梁紅英	01.04.06	3	SOLDER PIN	0056B00200	P	COPPER	
△	工程製 米處	梁紅英	01.01.11	4	END COVER	0056A4XX00	1	PA66(V0)	※002: M001
△	工程製 米處	梁紅英	01.01.11	5	LEVER	0056A5XX00	P	POM	WHITE
REV.	CONTENT	CHK.	DATE						

△	工程製	H J	08.06.14	5	LEVER	0056A5XX00	P	POM	WHITE
△	工程製 (2005.04.30製)	HQH	06.01.07	4	END COVER	0056A4XX00	1	PA66(V0)	※002: M001
△	工程製	Y.Y	05.05.18	3	SOLDER PIN	0056B00200	P	COPPER	
△	工程製 米處	梁紅英	01.04.06	2	CLAMP	0056B00300	P	STEEL	
△	工程製 米處	梁紅英	01.01.11	1	HOUSING	0056A3XX00	P	PA66(V0)	※002: M001