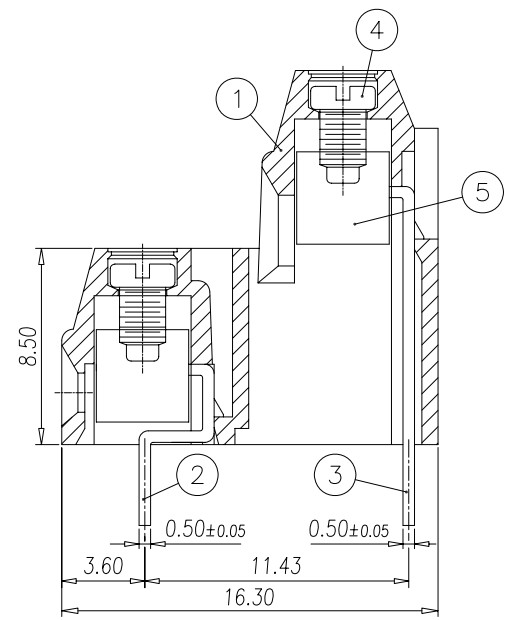
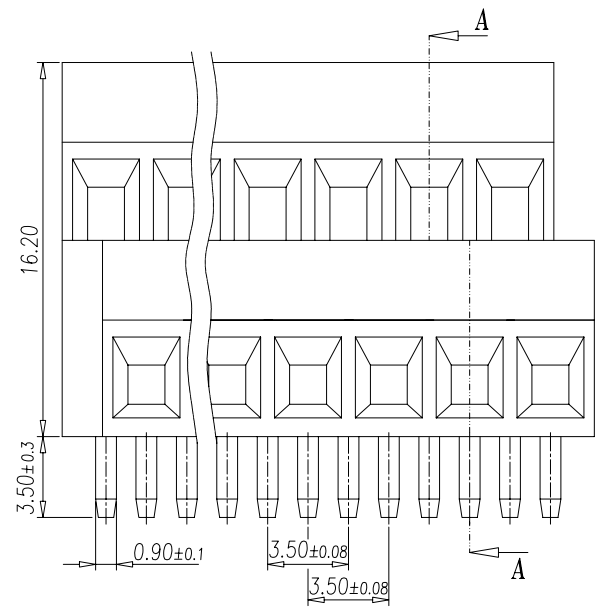


P.C.B. LAYOUT



SECTION: A-A

NOTES:

- Rating: 300V 10A
PITCH: 3.50mm
- Insulation Withstands Voltage:
AC 1500 V/MIN
- Insulation Resistance:
500MΩ or more at DC500V
- Using Temperature Range:
-40°C~+105°C
- Screw Torque Value: 2 kgf-cm
 1.5 kgf-cm
- Suitable Electric Wire: AWG ~~30~40~~
30~16
- Undimensioned Tolerances:

—	∩	□	0.05/10
⊥	//	≡	0.2/10
PITCH ERROR			0.05/10
UNDIMENSIONED TOLERANCES			±0.3

*.Pole: 2x2~24x2

5	WIRE CAGE	X000002800	P	BRASS	M2/Ni Plated
4	SCREW	S000008600 S000040000	P	STEEL	M2/Zn Plated
3	SOLDER	0050B00200	P/2	COPPER	Tin Plated
2	SOLDER	0050B00100	P/2	COPPER	Tin Plated
1	HOUSING	0050A3XX00	1	PA66	GREEN

ITEM	NAME OF PART	NO. OF PART	Q'TY	MATERIAL	NOTES
DWG.	MAY	DATE	01,11,15	UNITS	MM SHEET/OF 1/2
CHK.		DATE		SCALE	4:1 (:)
APP.		DATE			

△4	工程變更(統一螺絲)	JW	05.05.13
△3	工程變更	YFY	03.12.14
REV.	CONTENT	CHK.	DATE

DINKLE ENTERPRISE CO.,LTD

NAME: **EK350V4L-□□P**

DWG NO: SP-02-EK350V4L