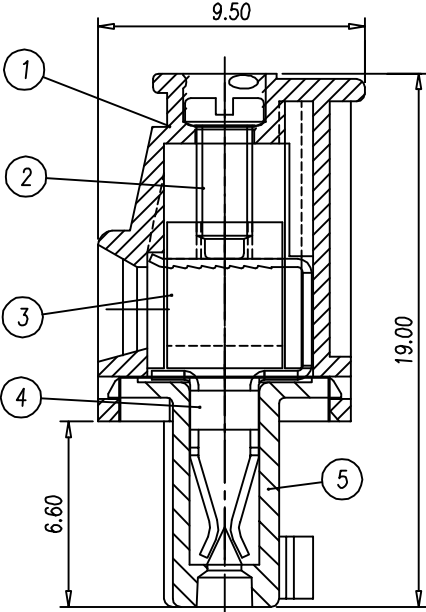
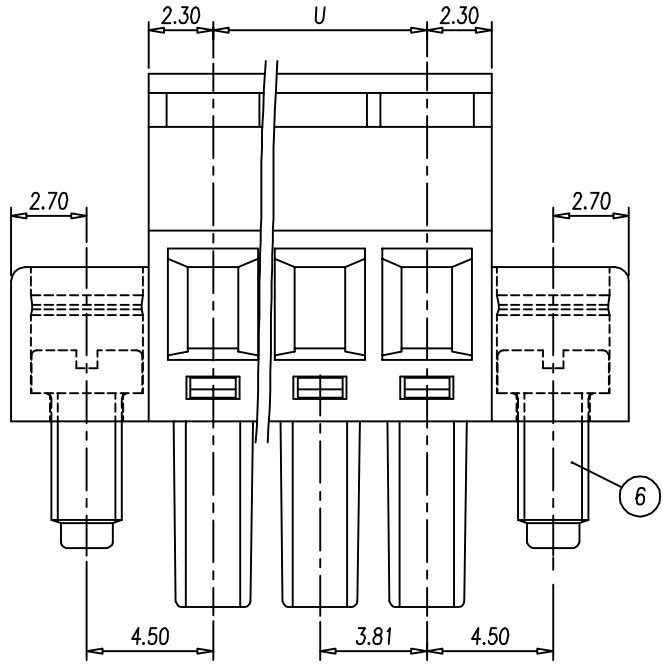


P	2	3	4	5	6	7	8	9	10	11	12
U	3.81	7.62	11.43	15.24	19.05	22.86	26.67	30.48	34.29	38.10	41.91
V	18.21	22.02	25.83	29.64	33.45	37.26	41.07	44.88	48.69	52.50	56.31
P	13	14	15	16	17	18	19	20	⚠		
U	45.72	49.53	53.34	57.15	60.96	64.77	68.58	72.39			
V	60.12	63.93	67.74	71.55	75.36	79.17	82.98	86.79			
Tolerances for PITCH ERROR											



- NOTES:
- Rating: ~~160V~~ 300V 8A ⚠
PITCH: 3.81 mm
 - Insulation Withstands Voltage: AC 1000 V/MIN
 - Insulation Resistance: 1000MΩ or more at DC500V
 - Using Temperature Range: ~~-40°C~+130°C~~
⚠ -40°C~+120°C
 - Screw Torque Value: 2kgf-cm(MAX)
 - Suitable Electric Wire: AWG 22~16
 - Undimensioned Tolerances:

—	∩	∇	0.05/10
⊥	//	≡	0.2/10
PITCH ERROR			0.05/10
UNDIMENSIONS TOLERANCES			±0.3

6	SCREW2	S000003400	2	STEEL	M2.5/Zn Plated
5	BASE HOUSING	0070P6XX00	1	PBT	>6P GREEN
		0070A4XX00	1	PBT	6P GREEN
4	CLAMP	0070B00400	P	BRONZE	
3	WIRE CAGE	X000007400 X000002700	P	Hard Brass STEEL	M2/Ni Plated M2/Tin Plated
2	SCREW1	S000010200	P	STEEL	M2/Zn Plated

⚠	工程變更	YFY	04.03.23	1	TOP HOUSING	0070P3XX00	1	PBT	GREEN		
⚠	工程變更	YFY	03.10.09	ITEM	NAME OF PART	NO. OF PART	Q'TY	MATERIAL	NOTES		
⚠	工程變更	YFY	03.06.17	DWG.	YAO	DATE	00,08,15	UNITS	MM	SHEET/OF	1/2
⚠	工程變更	YFY	03.06.13	CHK.		DATE		SCALE	5:1 (:)	⊕	
⚠	工程變更	梁紅英	01.10.31	APP.		DATE		NAME EC381RLM-□□P			
⚠	工程變更	梁紅英	01.7.25	DINKLE ENTERPRISE CO.,LTD							
REV.	CONTENT	CHK.	DATE					DINKLE			