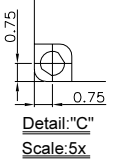
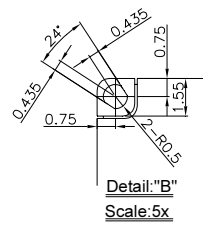
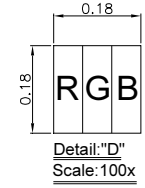
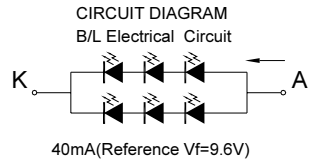


Detail:"A"
Scale:4x
ZIF Connector
Molex:502250-3591
or equivalent



- Specification:
 1. Display mode: 2.8" TFT/ Transmissive
 2. Display Color: 262K
 3. Viewing Direction: Full View
 4. Controller IC: ILI9341
 5. Operating temperature: -20°C to +70°C
 Storage temperature: -30°C to +80°C
 6. Backlight: 6chip White LED
 7. Unspecified tolerance: ±0.30mm.
 8. ROHS compliant



LCD MODULE	
FPC PIN OUT	
NO.	SYMBOL
1	GND
2	IM0
3	IM1
4	FMARK
5	GND
6	DB17
7	DB16
8	DB15
9	DB14
10	DB13
11	DB12
12	DB11
13	DB10
14	DB9
15	DB8
16	IOVCC
17	DB7
18	DB6
19	DB5
20	DB4
21	DB3
22	DB2
23	DB1
24	DB0
25	/CS
26	RS
27	/WR
28	/RD
29	/REST
30	VCI
31	GND
32	LED+
33	GND
34	LED-
35	GND