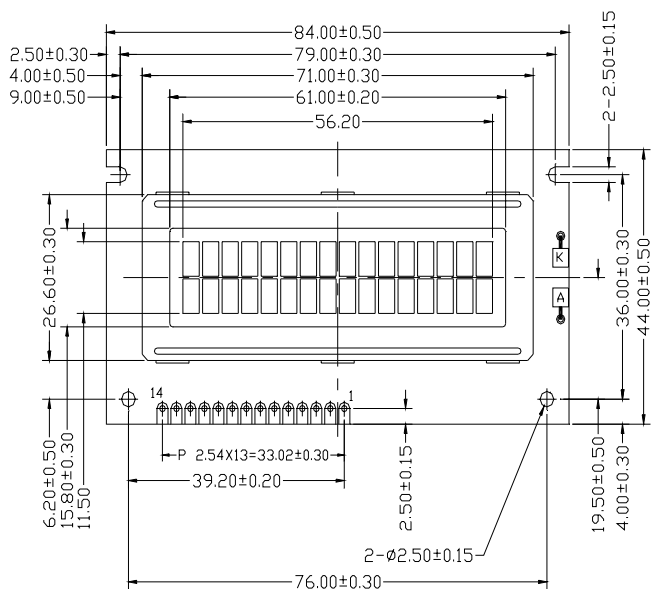
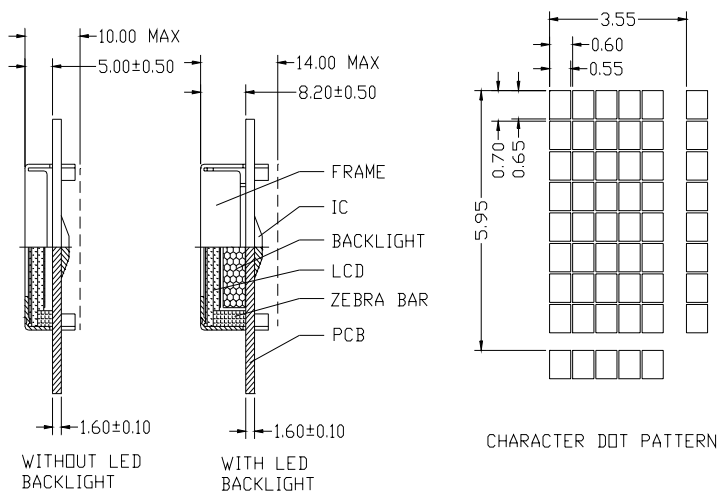


## 6. PHYSICAL DIMENSION



Note:

1. All dimension are in mm
2. Glass thickness:  
Front: 1.1  
Back: 1.1
3. Duty: 1/16 Bias: 1/5 Vop: 4.5V
4. STN, Positive, Transflective
5. Connector: zebra



Note

6. Operating Temperature: normal 0deg — +50deg  
Storage Temperature: normal -10deg — +60deg
7. Viewing direction : 6 o' clock
8. Module type: COB
9. Backlight: (Yellow-Green) LED

## 7. MECHANICAL DATA

ITEM	SPECIFICATION	UNIT
Module Size(W*H*T)	84.0×44.0×10.0(14)	mm
View Area(W*H)	61.0×15.8	mm
Active Area(W*H)	56.2×11.5	mm
Number of Character	16character×2 line	char
Dot Pitch(W*H)	0.60×0.70	mm
Dot Size(W*H)	0.55×0.65	mm
Character Pitch(W*H)	3.55×5.95	mm

## 8. PIN CONFIGURATION

ITEN	SYMBOL	DESCRIPTION
1	Vss	Ground
2	Vdd	Power supply
3	V0	Supply Voltage for VLcd
4	RS	Data/instruction register select
5	R/W	Read/Write select
6	E	Read-Write enable strobe
7	DB0	Data bus
8	DB1	Data bus
9	DB2	Data bus
10	DB3	Data bus
11	DB4	Data bus
12	DB5	Data bus
13	DB6	Data bus
14	DB7	Data bus
15(A)	LED(+)	LED Backlight +
16(K)	LED(-)	LED Backlight -