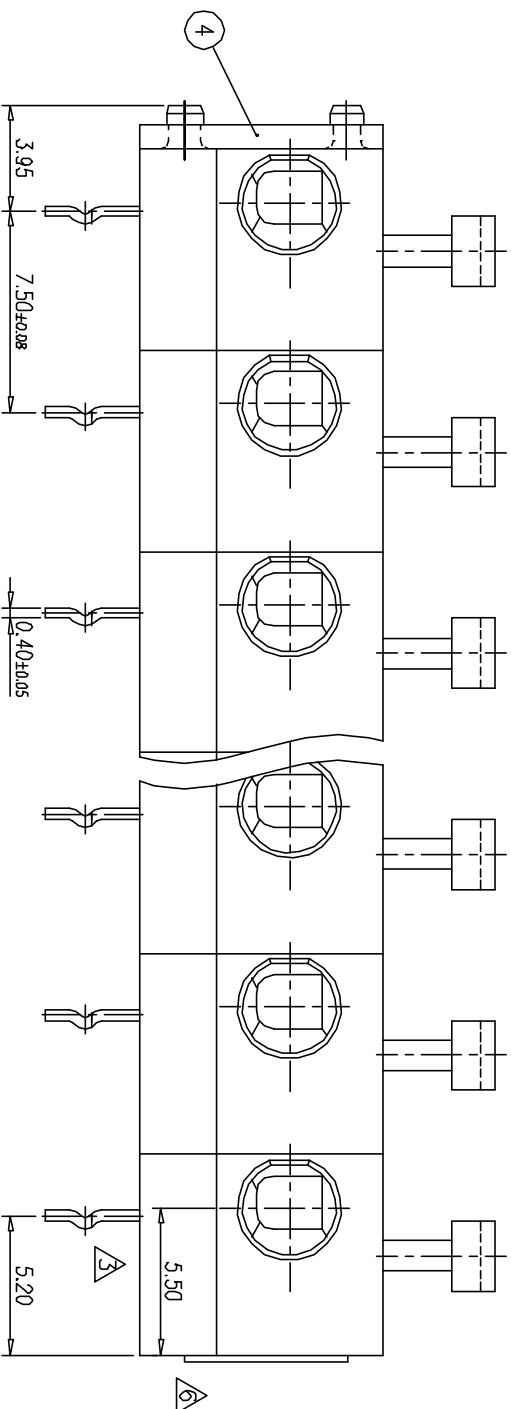
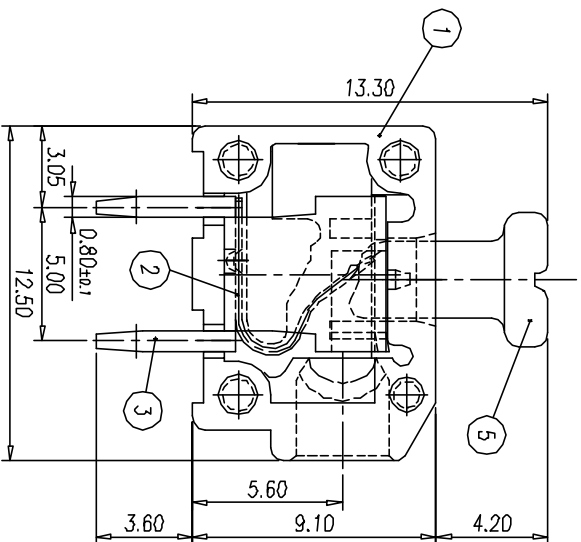
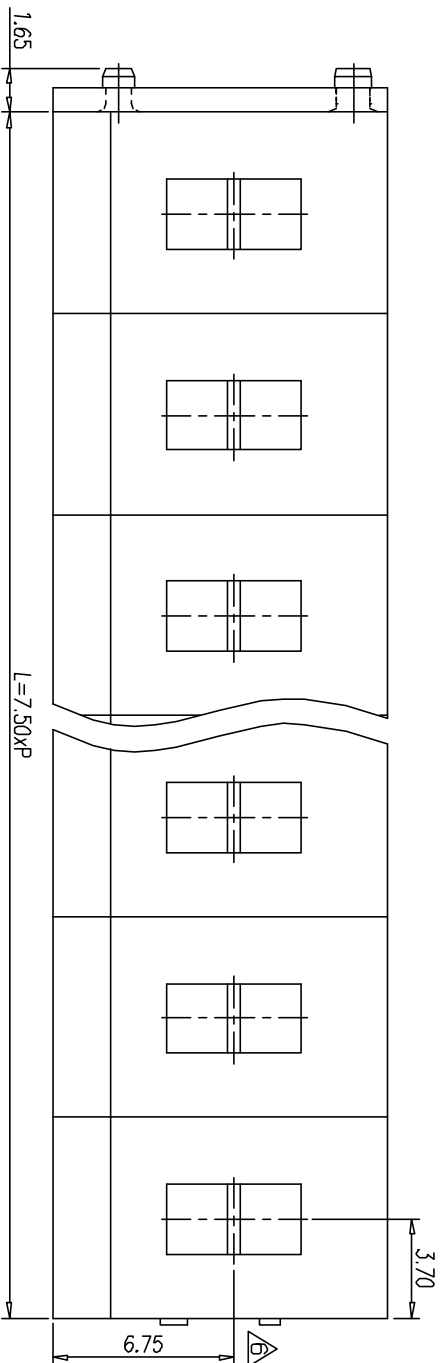


P.C.B. LAYOUT(REF)



NOTES:

1. Rating: 300V 10A (IEC 450V 24A)
2. Insulation Withstands Voltage: AC 1500V/MIN
3. Insulation Resistance: 500MΩ or more at DC500V
4. Using Temperature Range: -40°C~+105°C

Undimensioned Electric Wire: 20~14AWG (IEC 0.5~2.5mm<sup>2</sup>)

|              |   |         |
|--------------|---|---------|
| ~            | ~ | 0.05/10 |
|              |   | 0.2/10  |
| UNDIMENSIONS |   | 0.05/10 |
| TOLERANCES   |   | ±0.3    |

Undimensioned Tolerances:

|      |                   |      |          |      |              |             |          |          |            |          |     |
|------|-------------------|------|----------|------|--------------|-------------|----------|----------|------------|----------|-----|
| △    | 工程製               | H J  | 08.06.14 | ITEM | NAME OF PART | NO. OF PART | QTY      | MATERIAL | NOTES      |          |     |
| △    | 工程製 (2005.04.30製) | HQH  | 06.01.07 | 1    | HOUSING      | 0056A3XX00  | P        | PA66(V0) | ※002: M001 |          |     |
| △    | 工程製               | Y.Y  | 05.05.18 | 2    | CLAMP        | 0056B00300  | P        | STEEL    |            |          |     |
| △    | 工程製 米處            | 梁紅英  | 01.04.06 | 3    | SOLDER PIN   | 0056B00200  | P        | COPPER   |            |          |     |
| △    | 工程製 米處            | 梁紅英  | 01.01.11 | 4    | END COVER    | 0056A4XX00  | 1        | PA66(V0) | ※002: M001 |          |     |
| △    | 工程製 米處            | 梁紅英  | 01.01.11 | 5    | LEVER        | 0056A5XX00  | P        | POM      | WHITE      |          |     |
| REV. | CONTENT           | CHK. | DATE     | DWG. | RUAN         | DATE        | 98.08.25 | UNITS    | N/M        | SHEET/OF | 1/2 |

**DINKLE** ENTERPRISE CO., LTD

**DINKLE**

NAME: 144RA-□□P3

DWG NO. SP-02-144RAP30